


THE BRICK WARE MILL

 THE RESIDENCES AT
Milton Village

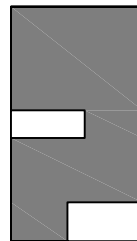
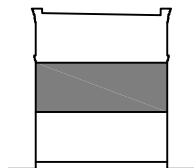
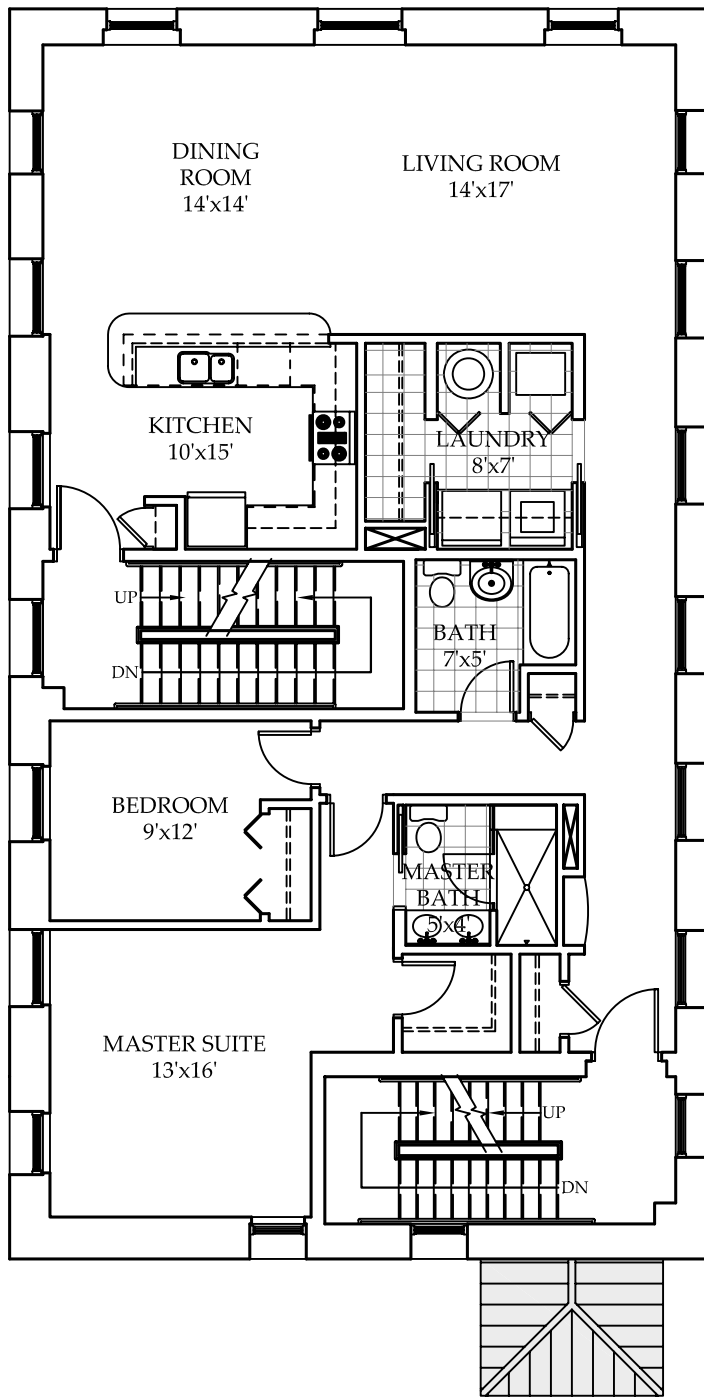
COLDWELL BANKER




6 ADAMS STREET MILTON, MA

FIRST FLOOR PLAN UNIT A
Total Square Feet Area = 1496 sf *

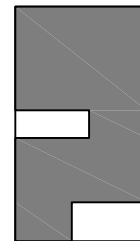
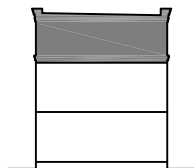
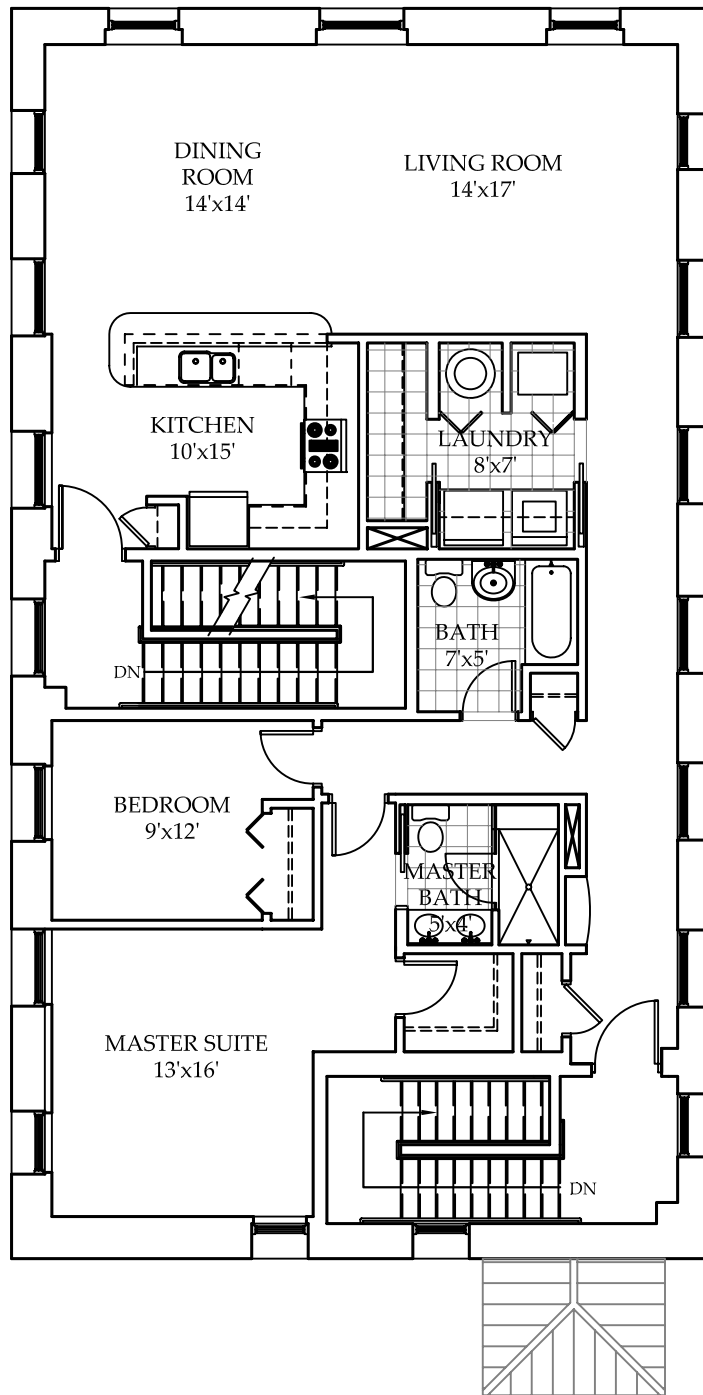
DWA
DOOLING WOODBRIER
ARCHITECTS INC.



* Total square feet areas are subject to change



<p>THE BRICK WARE MILL</p> 	 <p>6 ADAMS STREET MILTON, MA</p>	<p>SECOND FLOOR PLAN UNIT B</p> <p>Total Square Feet Area = 1411 sf *</p>	 <p>DOOLING WOODBRIER ARCHITECTS INC.</p>
--	--	--	--

* Total square feet areas are subject to change



<p>THE BRICK WARE MILL</p>	 <p>THE RESIDENCES AT <i>Milton Village</i></p>
	<p>6 ADAMS STREET MILTON, MA</p>

THIRD FLOOR PLAN UNIT C

Total Square Feet Area = 1413 sf *



DOOLING WOODBRIER
ARCHITECTS INC.

* Total square feet areas are subject to change